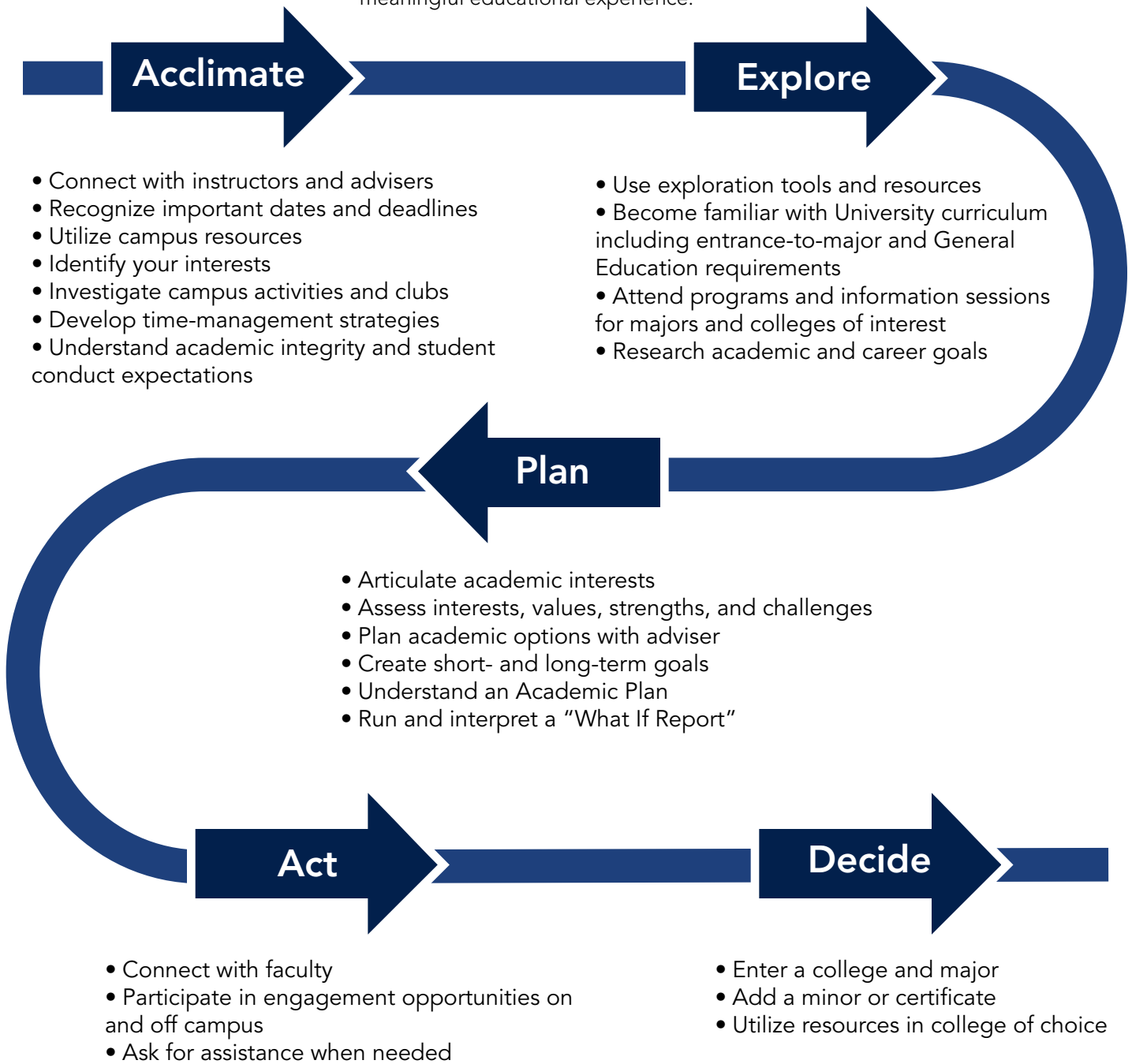




Advising Syllabus

A guide for student-led and adviser-supported exploration of interests, values, and abilities toward the goal of developing thoughtful decision making and a meaningful educational experience.



Schedule an Advising Appointment



Online
starfish.psu.edu
Find your assigned adviser in
your Success Network.

Call or Visit
814-865-7576
101 Grange Building: Speak with our staff
assistant at the front desk.

Please DO NOT email your adviser to schedule an appointment.tt

Appointment Types

Scheduled Advising

30 minutes
After Drop/Add Week

For issues such as:

- major exploration
- academic difficulty
- study abroad
- course planning

Quick-Question Advising

5-10 minutes
First come, first served
After Drop/Add Week

For issues such as:

- policy clarification
- referrals
- urgent concerns

Drop/Add Advising

First come, first served
During Drop/Add Week

For issues such as:

- schedule adjustments for current semester

Adviser Responsibilities

- Listen to concerns while respecting individual values and choices
- Promote the meaning and value of higher education
- Assist students in defining academic, career, and personal goals while creating a supportive educational plan
- Answer questions and interpret curriculum and degree requirements, as well as University policies and procedures
- Help identify campus resources and make referrals when appropriate
- Collaborate with others on campus to facilitate comprehensive student support
- Adhere to the highest principles of ethical behavior and maintain confidentiality
- Keep notes in Starfish from advising meetings

Student Responsibilities

- Become knowledgeable about University policies and procedures
- Understand entrance-to-major and other degree requirements
- Attend advising appointments regularly
- Come prepared to each appointment with questions
- Use tools and resources to assist with exploration of self, fields of study, and career paths
- Ask questions when you do not understand
- Be open to advice from advisers
- Use Penn State email and read DUS News
- Make informed decisions
- Accept responsibility for decisions and actions (or inactions) that affect educational progress

Resources

- Career Services
- Counseling & Psychological Services (CAPS)
- Penn State Learning
- Student Disability Resources
- Multicultural Resource Center
- University Libraries

Tools

- The Undergraduate Bulletin
- LionPATH
- DUS Website
- DUSuccess
- Starfish

Important Dates

- Drop/add period*
- Late drop
- Withdrawal

*summer sessions have shorter drop/add periods

This publication is available in alternative media on request.

Penn State is an equal opportunity, affirmative action employer, and is committed to providing employment opportunities to all qualified applicants without regard to race, color, religion, age, sex, sexual orientation, gender identity, national origin, disability or protected veteran status. UGE 18-151